

WIRE ROD

SAE 1006 - SAE 1008 - SAE 1010 - ELECTRODES USD7 - RSt 37.2

TECHNICAL SPECIFICATIONS

TYPE:

Hot-Rolled Wire Rod

STEEL GRADE:

- 1) SAE 1006 according to ASTM A510M
- 2) SAE 1008 according to ASTM A510M
- 3) SAE 1010 according to ASTM A510M
- 4) ELECTRODES (USD 7) according to DIN 17145
- 5) RSt 37-2 according to DIN 17100

FORM - DIAMETER:

Coils diameters form $\varnothing 5.5$ to $\varnothing 16$ mm

COIL WEIGHT:

From 1,250 to 1,450kg

DIMENSION - WEIGHTS - TOLERANCES:

According to DIN 59110

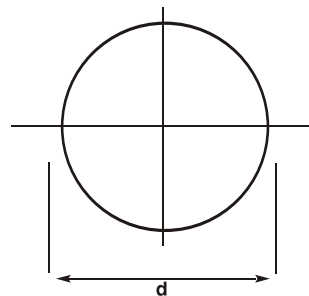
WIRE ROD



SIDENOR's Wire Rod is produced at the Thessaloniki plant, Greece. The produced grades are:

- SAE 1006, 1008, 1010 according to ASTM A510M
- ELECTRODE QUALITY (USD 7) according to DIN 17145
- RSt 37-2 according to DIN 17100.

SIDENOR's Wire Rod is suitable for a vast range of cold-drawing and covers all the needs of the low-carbon wire products industry.



SALES NETWORK

www.sidenor.gr • www.stomana.bg

GREECE-SIDENOR SA

33, Amarooussiou-Halandriou street, GR-15125 Maroussi, Athens, Greece
Tel.: +30 210 6787.753
Fax: +30 210 6787.740

GREECE-SIDENOR SA

12th klm, National Road Thessaloniki-Veria, GR-57008, Ionia, Thessaloniki, Greece
Tel: +30 2310 790.118
Fax: +30 2310 790.144

BULGARIA-STOMANA SA

1, Vladaisko Vastanie str. BG-2304 Pernik, Bulgaria
Tel.: +35 976 681.013
Fax: +35 976 681.951

FYROM-DOJLAN STEEL Ltd

S. Nikolic, Posta Nov Dojran, FYROM
Tel.: +389 34 219.228
Fax: +389 34 219.263

CHEMICAL COMPOSITION OF WIRE ROD STEEL GRADES

STEEL GRADE	C (%) max	Mn (%)	S (%) max	P (%) max	Si (%) max	Cr (%) max	Ni (%) max	Cu (%) max	TYPICAL USES
SAE 1006	0.08	0.30-0.40	0.025	0.020	0.08	0.10	0.10	0.15	Black & galvanized wires, small nails
SAE 1008	0.09	0.30-0.50	0.030	0.020	0.10	0.15	0.15	0.25	Black & galvanized wires, nails, galvanized fencing mesh
SAE 1010	0.10	0.40-0.60	0.040	0.025	0.15	0.20	0.20	0.35	Concrete reinforcing wire mesh, nails, galvanized fencing mesh
ELECTRODES	0.09	0.40-0.60	0.025	0.020	0.05	0.10	0.10	0.15	Coated welding electrodes (according to DIN 17145 / USD7)
RSt 37-2	0.12	0.40-0.65	0.040	0.025	0.20	0.20	0.20	0.40	Concrete reinforcing wire mesh

DIAMETERS, WEIGHTS & TOLERANCE OF WIRE ROD

DIAMETER d (mm)	PERMISSIBLE DEVIATION (mm)	NOMINAL CROSS-SECTION (cm ²)	NOMINAL WEIGHT (kg/m)	PERMISSIBLE OUT-OF-ROUNDNESS (mm)
5.5	0.3	0.238	0.187	0.48
6.0		0.283	0.222	
6.5		0.332	0.260	
7.0	0.4	0.385	0.302	0.64
8.0		0.503	0.395	
9.0		0.636	0.499	
10.0		0.785	0.617	
11.0		0.950	0.746	
12.0		1.130	0.888	
14.0	0.5	1.540	1.210	0.80
16.0		2.010	1.580	